

Instructor Guide



103: Introduction and Overview to Train Stops



Table of Contents

Overview.....4
Purpose & Components.....11
Configurations.....16
Train Stop Types.....27
Other Train Stops.....54
Summary.....55





For Signals Training
Consortium Use Only





Signals – Introduction and Overview to Train Stops

Instructor's Guide



Icons Used In This Guide

-  **REVIEW** slides
-  **ASK**
-  **CLASSROOM ACTIVITY**
-  **SMALL GROUP ACTIVITY**

-  **INDIVIDUAL ACTIVITY**
-  **WRITE**
-  **Multimedia**
-  **REFER** participants to

Agenda

Topic #	Topic Title	Duration
1	Overview	30 Minutes
2	Purpose & Components	20 Minutes
3	Configurations	20 Minutes
4	Train Stop Types	40 Minutes
5	Other Train Stops	40 Minutes
6	Field Trip	90 Minutes
7	Summary	30 Minutes
Total Time:		270 Minutes

Signals – Introduction and Overview to Train Stops

Instructor's Guide



Overview

Purpose The purpose of this module is to:
provide an overview of the purpose, principles of operation and various configurations of train stops that are present in transit and commuter rail systems.

Objectives

At the end of this lesson, the transit elevator/escalator trainee will be able to:

- Describe principles of operation and purpose of train stops
- Differentiate between pneumatic and electric train stops
- Identify and describe different types of train stops
- Identify and describe the purpose of a dragging equipment detector (DED) trip vane device

Materials

Mandatory Make sure you have the following

- PowerPoint Presentation
- Coursebook
- Quizzes
- Pencils
- Handouts:

Optional

You may also want the following for optional activities:

- Chalk board with chalk, large paper with marker, etc.
- Internet connection or downloaded video(s)
- Lab, simulator or out of service elevator

Signals – Introduction and Overview to Train Stops

Instructor's Guide



Module Length: 270 min

Time remaining: 270 min

This section: 30 min (9 slides)

Section start time: _____

Section End Time: _____

DO



REVIEW introduction slides

Instructor's Notes

SAY

In your own words:

Welcome to the course on The Introduction and Overview of Trains Stops.

Advance

Click on the movie symbol and play video.

After video:

Sometimes trains do not need to stop, but what we are going to learn today is what equipment is used for when they need to stop.

Riders, and we, depend on us.

Advance

Materials Needed

✓ PPT slides 1, 2



✓ Internet Connection
or downloaded
video

Signals – Introduction and Overview to Train Stops

Instructor's Guide



Module Length: 270 min Time remaining: 240 min This section: 20 min (5 slides) Section start time: _____ Section End Time: _____

DO



REVIEW slide



REFER participants to textbook

Instructor's Notes

SAY

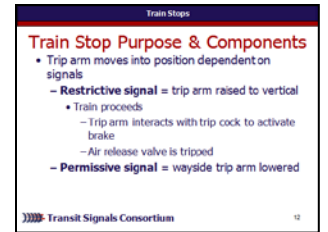
In your own words:

Note that inside the stop box are numerous **controllers**. These controllers communicate with the **central instrument location (CIL)**, and change the trip arm position and **aspect** accordingly. This is done through a series of **contacts**, also known as **fingers**. These contacts whether they are made (closed) or not made (opened) communicate with the CIL. These connections determine the aspect of the signal. This information, as well as the positioning of the arm, is relayed back to the CIL. Signals from the CIL are determined by track circuits and the location of the train(s). This process between field equipment and the CIL via the stop box is depicted in Figure 103.10. Note that all these communications happen in “real-time.”

Advance

Materials Needed

✓ PPT slides 11, 12, 13



✓ Course book