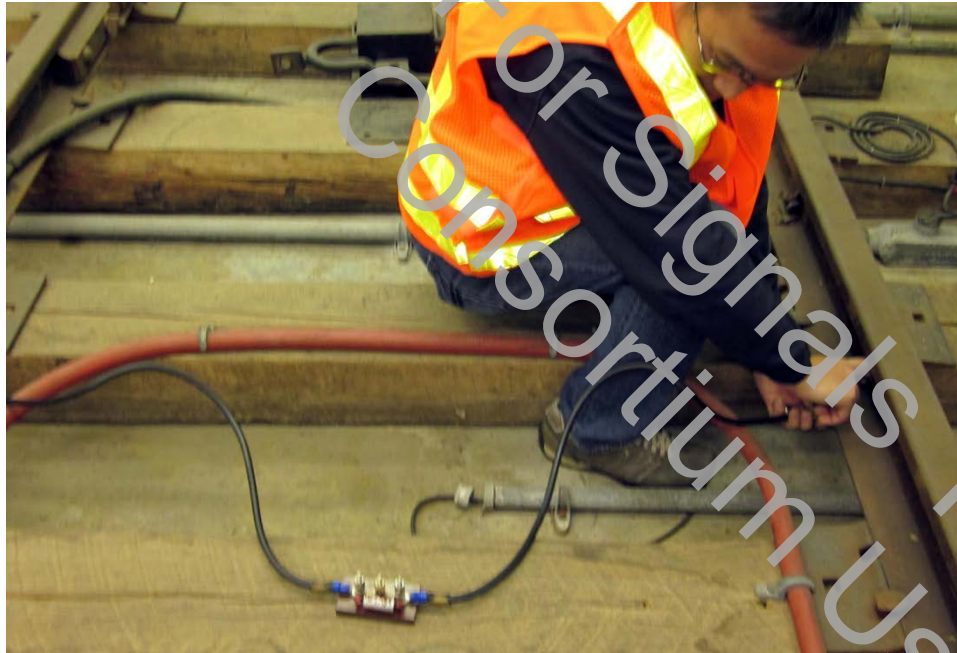


# Instructor Guide



## 201: Track Circuits Inspection & Maintenance Module 1: Overview & Safety



**Table of Contents**

Overview.....4

Track Circuit Safety.....13

Measuring Track Circuit Current Flow.....28

Tools.....31

Maintenance Schedules.....50

Record Keeping.....56

Summary.....61



Icons Used In This Guide



REVIEW slides



ASK



CLASSROOM ACTIVITY



SMALL GROUP ACTIVITY



INDIVIDUAL ACTIVITY



WRITE



Multimedia



REFER participants to

Agenda

Topic #	Topic Title	Duration
1	Overview	30 Minutes
2	Track Circuit Safety	60 Minutes
3	Measuring Current Flow	20 Minutes
4	Tools	40 Minutes
5	Maintenance Schedules	10 Minutes
6	Record Keeping	10 Minutes
7	Field Trip	70 Minutes
8	Summary	30 Minutes
	Total Time:	270 Minutes



**Overview**

**Purpose** The purpose of this module is to:

- provide the participant with an overview to inspecting and maintaining track circuits.

**Objectives**

At the end of this lesson, the transit elevator/escalator trainee will be able to:

- Use safety measures when working around track circuit
- Identify authority-specific maintenance procedures
- Record maintenance work performed
- Identify tools used in track circuit inspection and maintenance work
- Specify inspection and maintenance timetables for track circuits

**Materials**

- Mandatory** Make sure you have the following
- PowerPoint Presentation
  - Coursebook
  - Quizzes
  - Pencils
  - Handouts: Handout 1 Course 201 Mod 1 WMATA Case Study
  - Internet connection or downloaded videos
- Optional** You may also want the following for optional activities:
- Chalk board with chalk, large paper with marker, etc.
  - Lab, simulator or out of service elevator
  - Your agency operating rules for safe inspection and maintenance

# Track Circuits Inspection & Maintenance Overview & Safety

## Instructor's Guide



Module Length: 270 min      Time remaining: 270 min      This section: 30 min (7 slides)      Section start time: \_\_\_\_\_      Section End Time: \_\_\_\_\_

DO

SAY

Materials Needed



**REVIEW** introduction slides

### In your own words:

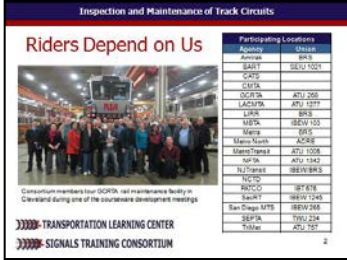
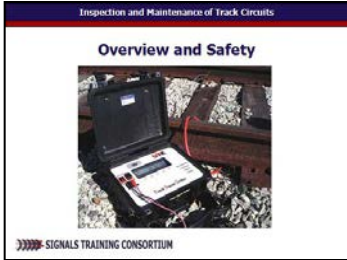
Welcome to the course on Overview and Safety for Inspection and Maintenance of Track Circuits

**Advance**

The course you're about to take part in was developed by a group of over 40 Subject Matter Experts from across the country who are driven to create more dependable transportation systems, and gain respect for Signal Maintainers and the work they do. Managers, trainers and frontline workers just like yourselves contributed their combined experience of over 700 years with the skills of instructional designers at the Transportation Learning Center to make this program possible.

**Advance**

✓PPT slides 1, 2



### Instructor's Notes



Track Circuits Inspection & Maintenance Overview & Safety

*Instructor's Guide*



Module Length: 270 min      Time remaining: 240 min      This section: 60 min (10 slides)      Section start time: \_\_\_\_\_      Section End Time: \_\_\_\_\_

DO	SAY	Materials Needed
<div data-bbox="34 464 144 568"></div> <div data-bbox="170 492 428 528"><p><b>REVIEW</b> slides</p></div> <div data-bbox="28 792 444 835"><p><b>Instructor's Notes</b></p></div> <div data-bbox="28 892 614 1242"><hr/><hr/><hr/><hr/><hr/></div>	<p><b>In your own words:</b></p> <ul style="list-style-type: none"><li>• Be aware of energized rail heating equipment, e.g. snow-melters, crib heaters.</li><li>• Locate all voltage sources and accessible current paths before making connections to circuitry.</li><li>• For measuring tools, double check their settings and lead connections before making measurements.</li><li>• In high-energy circuits, dangerous arc flashes can occur if the circuit is shorted.</li></ul> <p><b>Advance</b></p>	<p>✓ PPT slide 15</p> <div data-bbox="1541 531 1881 782"></div> <p>✓ Course book – p. 6</p>