

Elevator – Troubleshooting Drive Systems

Instructor's Guide



Table of Contents

Overview.....	4
Troubleshooting Strategies.....	14
Troubleshooting Drive Systems.....	34
Documentation.....	69
Summary.....	75

PREVIEW ONLY

Elevator – Troubleshooting Drive Systems

Instructor's Guide



Icons Used In This Guide



REVIEW slides



ASK



CLASSROOM ACTIVITY



SMALL GROUP ACTIVITY



INDIVIDUAL ACTIVITY



WRITE



Multimedia



REFER participants to

Agenda

Topic #	Topic Title	Duration
1	Overview	40 minutes
2	Troubleshooting Strategies	40 minutes
3	Field Trip	60 minutes
4	Troubleshooting Drive Systems	60 minutes
5	Documentation	10 minutes
6	Field Trip	60 minutes
7	Summary	30 minutes
	Total Time:	300 minutes

PREVIEW ONLY

Elevator – Troubleshooting Drive Systems

Instructor's Guide



Overview

Purpose The purpose of this module is to:

Provide the participant with an overview of gearless drive systems for elevators in use in a public transit environment

Objectives

At the end of this lesson, the transit elevator/escalator trainee will be able to:

- Explain how a gearless drive system operates
- Identify major components of the gearless drive systems
- List methods of controlling gearless drive systems
- Identify the speed specifications of a gearless drive system
- Explain difference between geared and gearless drive systems

Materials

Mandatory Make sure you have the following

- PowerPoint Presentation
- Coursebook
- Quizzes
- Pencils
- Elevator Industry Field Employees' Safety Handbook

Optional

You may also want the following for optional activities:

- Chalk board with chalk, large paper with marker, etc.
- Internet connection
- Lab, simulator or out of service elevator

Elevator – Troubleshooting Drive Systems

Instructor's Guide



Module Length: 300 min

Time remaining: 300 min

This section: 40 min (11 slides)

Section start time: _____

Section End Time: _____

DO



REVIEW introduction slides



Multimedia

Instructor's Notes

SAY

In your own words:

Welcome to the course on Troubleshooting Drive Systems.

Advance

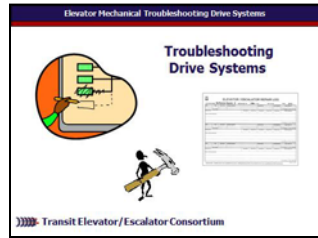
We have all had some experience with troubleshooting.

[Multi-media: Click on the figure with hammer for website with humorous cartoon related to troubleshooting.]

Advance

Materials Needed

✓ PPT slides 1, 2



✓ Internet connection

Elevator – Troubleshooting Drive Systems

Instructor's Guide



Module Length: 300 min

Time remaining: 300 min

This section: 40 min (11 slides) Section start time: _____

Section End Time: _____

DO	SAY	Materials Needed
<div data-bbox="34 464 144 568" data-label="Image"> </div> <div data-bbox="150 499 618 549" data-label="Text"> <p>REVIEW module objectives</p> </div> <div data-bbox="28 792 444 835" data-label="Section-Header"> <h3>Instructor's Notes</h3> </div> <hr/> <hr/> <hr/> <hr/> <hr/>	<div data-bbox="672 421 1023 464" data-label="Section-Header"> <p>In your own words:</p> </div> <div data-bbox="705 485 937 528" data-label="Text"> <p>Today we will</p> </div> <div data-bbox="705 542 1275 628" data-label="Text"> <p>Advance Identify troubleshooting strategies for drive systems</p> </div> <div data-bbox="705 642 1371 728" data-label="Text"> <p>Advance Perform a sensory inspection using visual, smell, sound, and touch</p> </div> <div data-bbox="705 735 1342 778" data-label="Text"> <p>Advance Check for normal operation</p> </div> <div data-bbox="705 785 1352 863" data-label="Text"> <p>Advance List various problems which can occur in a drive system</p> </div> <div data-bbox="705 871 1352 992" data-label="Text"> <p>Advance Identify corrective actions related to common problems in a drive system</p> </div> <div data-bbox="705 1013 1226 1099" data-label="Text"> <p>Advance Perform correct documentation of the problems</p> </div> <div data-bbox="705 1106 869 1142" data-label="Text"> <p>Advance</p> </div>	<div data-bbox="1497 471 1729 506" data-label="Text"> <p>✓ PPT slide 3</p> </div> <div data-bbox="1535 528 1854 763" data-label="Image"> </div>

Elevator – Troubleshooting Drive Systems

Instructor's Guide



Module Length: 300 min

Time remaining: 300 min

This section: 40 min (11 slides) Section start time: _____

Section End Time: _____

DO



ASK participants what they remember about safety and elevators



SMALL GROUP ACTIVITY



WRITE

Instructor's Notes

SAY

In your own words:

Thinking back to other courses or just in general, who can think

What do you know about elevator mechanical drive systems?

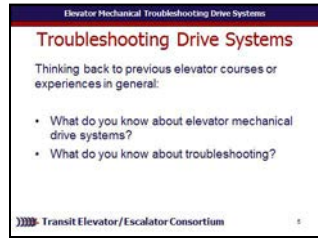
[Allow participants to think for a minute and perhaps discuss with a partner ideas as well as write down any ideas. Discuss participant responses and if possible list them on a chalk board or similar.]

Knowing the system is the first step in troubleshooting. That knowing what is normal will help you detect what is not normal when trouble arises.

Do Not Advance

Materials Needed

✓PPT slide 5



Elevator – Troubleshooting Drive Systems

Instructor's Guide



Module Length: 300 min

Time remaining: 300 min

This section: 40 min (11 slides) Section start time: _____

Section End Time: _____

DO



REVIEW slide



ASK What do you recall about inspection mode from earlier courses?

Instructor's Notes

SAY

In your own words:

When attempting to resolve a problem with elevator drive systems, safety is always the first priority. Run the elevator in inspection mode to further troubleshoot potential problems. In inspection mode, the elevator will run slowly so there is a greater opportunity to pinpoint problems. Operating the elevator in inspection mode also reduces the risk of breaking the elevator components.

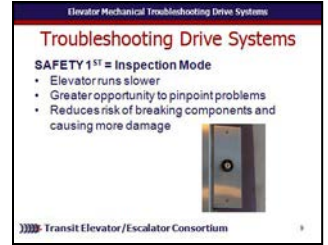
[Ask] What do you recall about inspection mode from earlier courses?

[Discuss participant responses.]

Advance

Materials Needed

✓ PPT slide 9



Elevator – Troubleshooting Drive Systems

Instructor's Guide



Module Length: 300 min

Time remaining: 260 min

This section: 40 min (19 slides) Section start time: _____

Section End Time: _____

DO



REVIEW slide

Instructor's Notes

SAY

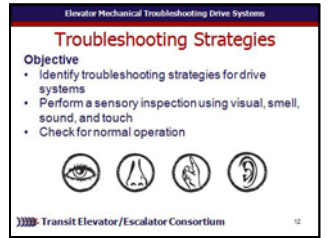
In your own words:

Before we look at troubleshooting drive systems specifically, lets take a look at troubleshooting elevator systems in general by talking about some strategies with special attention to sensory inspections and checking for normal operation.

Advance

Materials Needed

✓ PPT slide 12



Elevator – Troubleshooting Drive Systems

Instructor's Guide



Module Length: 300 min

Time remaining: 260 min

This section: 40 min (19 slides) Section start time: _____

Section End Time: _____

DO	SAY	Materials Needed
<div data-bbox="34 464 144 564" data-label="Image"> </div> <div data-bbox="164 492 415 535" data-label="Text"> <p>REVIEW slide</p> </div> <div data-bbox="28 792 454 842" data-label="Section-Header"> <h3>Instructor's Notes</h3> </div> <hr/> <hr/> <hr/> <hr/> <hr/>	<div data-bbox="666 428 1033 471" data-label="Section-Header"> <p>In your own words:</p> </div> <div data-bbox="666 492 1439 756" data-label="Text"> <p>Some common sight problems often seen by elevator technicians include: Severe oil leakage. Oil discoloration. Elevator not responding to calls. Discoloration of paint on motor casing. Elevator not moving. Elevator will not ascend to the top floor.</p> </div> <div data-bbox="666 806 840 849" data-label="Section-Header"> <p>Advance</p> </div>	<div data-bbox="1497 478 1748 514" data-label="Text"> <p>✓ PPT slide 14</p> </div> <div data-bbox="1535 535 1864 763" data-label="Image"> </div>

Elevator – Troubleshooting Drive Systems

Instructor's Guide



Module Length: 300 min

Time remaining: 260 min

This section: 40 min (19 slides) Section start time: _____

Section End Time: _____

DO	SAY	Materials Needed
<div data-bbox="34 464 144 568" data-label="Image"></div> <div data-bbox="164 492 415 535" data-label="Text"><p>REVIEW slide</p></div> <div data-bbox="28 792 454 835" data-label="Section-Header"><h3>Instructor's Notes</h3></div> <hr/> <hr/> <hr/> <hr/> <hr/>	<div data-bbox="666 428 1033 471" data-label="Section-Header"><h4>In your own words:</h4></div> <div data-bbox="666 492 1381 749" data-label="Text"> <p>Common problems often detected through hearing include: Unusual noise. Extreme noise particularly with hydraulic drives. Hammering noise.</p> </div> <div data-bbox="666 799 840 842" data-label="Section-Header"><h4>Advance</h4></div>	<div data-bbox="1497 471 1748 514" data-label="Text"><p>✓ PPT slide 16</p></div> <div data-bbox="1535 528 1854 763" data-label="Image"> </div>

Elevator – Troubleshooting Drive Systems

Instructor's Guide


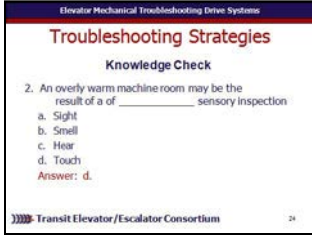


Module Length: 300 min

Time remaining: 260 min

This section: 40 min (19 slides) Section start time: _____

Section End Time: _____

DO	SAY	Materials Needed
 ASK Instructor's Notes _____ _____ _____ _____ _____	<p>In your own words: An overly warm machine room may be the result of a _____ sensory inspection</p> <ul style="list-style-type: none">a. Sightb. Smellc. Heard. Touch <p>Call on participants for answer Advance once given the correct answer Answer: d.</p> <p>Advance.</p>	<p>✓PPT slide 24</p> 

Elevator – Troubleshooting Drive Systems

Instructor's Guide



Module Length: 300 min

Time remaining: 260 min

This section: 40 min (19 slides) Section start time: _____

Section End Time: _____

DO	SAY	Materials Needed
<div data-bbox="34 471 144 578" data-label="Image"></div> <div data-bbox="173 506 260 542" data-label="Text"><p>ASK</p></div> <div data-bbox="28 792 444 835" data-label="Section-Header"><h3>Instructor's Notes</h3></div> <hr/> <hr/> <hr/> <hr/> <hr/>	<div data-bbox="672 428 1023 464" data-label="Section-Header"><p>In your own words:</p></div> <div data-bbox="672 471 1449 556" data-label="Text"><p>Checking for common solutions is an example of using the strategy of _____.</p></div> <div data-bbox="753 564 1265 735" data-label="List-Group"> <ul style="list-style-type: none"> a. Prior Occurrence b. Recent Alterations c. Function Vs. Non-Function d. Hypothesize </div> <div data-bbox="672 778 1391 863" data-label="Text"><p>Call on participants for answer Advance once given the correct answer</p></div> <div data-bbox="672 863 859 906" data-label="Text"><p>Answer: a.</p></div> <div data-bbox="672 949 850 992" data-label="Text"><p>Advance.</p></div>	<div data-bbox="1497 471 1748 506" data-label="Text"><p>✓PPT slide 28</p></div> <div data-bbox="1535 528 1854 763" data-label="Image"></div>

Elevator – Troubleshooting Drive Systems

Instructor's Guide



) Module Length: 300 min Time remaining: 160 min This section: 60 min (40 slides) Section start time: _____ Section End Time: _____

DO



REVIEW slide



REFER participants to course book, page 50



WRITE Authority-specific notes

Instructor's Notes

SAY

In your own words:

Lets take some time now to look at specific problems that can occur in a drive system, and how we can address them. In this section, we will be using our course book, so go ahead and take that out turning to page 50.

[Refer participants to page 50 in their course book. They should also have something to write with for authority specific notes.]

Advance

Materials Needed

✓PPT slide 32



Elevator – Troubleshooting Drive Systems

Instructor's Guide



Module Length: 300 min

Time remaining: 160 min

This section: 60 min (40 slides) Section start time: _____

Section End Time: _____

DO



REFER participants to common issues chart



REVIEW Common issues, symptoms, causes, corrective actions



WRITE Authority-specific notes

Instructor's Notes

SAY

In your own words:

[Refer participants to common issues charts.]

[Review and discuss the common issue, symptoms, possible causes, and corrective actions.]

[Write: Participants should write any authority specific related information in the chart.]

Advance

Materials Needed

✓PPT slide 41

Elevator Mechanical Troubleshooting Drive Systems			
Troubleshooting Geared Drives			
Commonly Reported Issues and Symptoms	Possible Causes	Corrective Actions	Authority Specific Applications
Not moving	Worn brushes, open safety circuit, cold oil due to extreme temperatures, Oil not at operating temperature	<ul style="list-style-type: none"> Trace and repair cause of thermal overload condition Repair safety circuit fault Warm up oil per OEM recommendations 	

Transit Elevator/ Escalator Consortium

Elevator – Troubleshooting Drive Systems

Instructor's Guide



Module Length: 300 min

Time remaining: 160 min

This section: 60 min (40 slides) Section start time: _____

Section End Time: _____

DO



REFER participants to common issues chart



REVIEW Common issues, symptoms, causes, corrective actions



WRITE Authority-specific notes

Instructor's Notes

SAY

In your own words:

[Refer participants to common issues charts.]

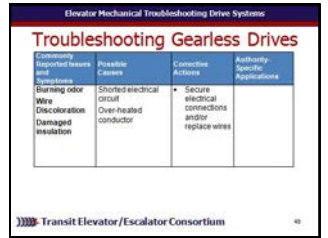
[Review and discuss the common issue, symptoms, possible causes, and corrective actions.]

[Write: Participants should write any authority specific related information in the chart.]

Advance

Materials Needed

✓PPT slide 49



Elevator – Troubleshooting Drive Systems

Instructor's Guide



Module Length: 300 min

Time remaining: 160 min

This section: 60 min (40 slides) Section start time: _____

Section End Time: _____

DO



REFER participants to common issues chart



REVIEW Common issues, symptoms, causes, corrective actions



WRITE Authority-specific notes

Instructor's Notes

SAY

In your own words:

[Refer participants to common issues charts.]

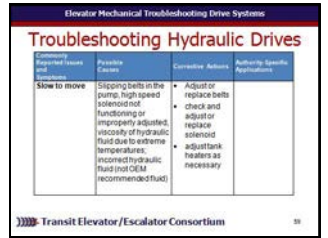
[Review and discuss the common issue, symptoms, possible causes, and corrective actions.]

[Write: Participants should write any authority specific related information in the chart.]

Advance

Materials Needed

✓PPT slide 59



Elevator – Troubleshooting Drive Systems

Instructor's Guide



Module Length: 300 min

Time remaining: 100 min

This section: 10 min (5 slides)

Section start time: _____

Section End Time: _____

DO

SAY

Materials Needed



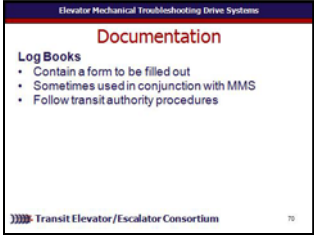
REVIEW slide

In your own words:

Some transit authorities rely on the use of log books. Log books typically contain a form that the technician needs to fill out. In some instances both maintenance software and log books are used. Make sure to follow the procedures of your transit authority.

Advance

✓ PPT slide 70



Instructor's Notes

Elevator – Troubleshooting Drive Systems

Instructor's Guide



Module Length: 300 min

Time remaining: 30 min

This section: 30 min (3 slides)

Section start time: _____

Section End Time: _____

DO

SAY

Materials Needed



**CLASSROOM
ACTIVITY**



INDIVIDUAL ACTIVITY

Instructor's Notes

In your own words:

Administer quizzes.

- ✓ PPT slides 75
- ✓ Quizzes
- ✓ Pencils

