

# Instructor/Participant Guide



210: Escalator-Specific: Step Installation and Maintenance

*Module 5: Step Band Alignment and Adjustment*

# Step Band Alignment and Adjustment



## Table of Contents:

Introduction .....	1
Choose a Case .....	2
Safety Specific Procedures.....	3
Conventional Step Band .....	4
Conventional – Chain Tension.....	5
Conventional – Chain Tension.....	6
Conventional – Track Alignment .....	7
Modular Step Band .....	8
Modular – Chain Tension.....	9
Modular – Track Alignment.....	10
Summary .....	11

## Table of Figures:

Figure 1: Steps Bunching Up.....	6
Figure 2: Modular Step Band.....	8
Figure 3: Modular Chain Tension .....	9

PREVIEW ONLY



## Icons Used in This Guide

Throughout the Instructor's Guide, the following icons indicate the type of content being presented.



**Refer To**



**PowerPoint**



**Multimedia**



**Web based Training**



**Write**



**Ask**



**Individual Activity**



**Small Group Activity**



**Classroom Activity**



**Duration**

## Agenda

Topic No.	Topic Title	Duration
1	Introduction	10 minutes
2	Safety Specific Procedures Related to Step Band	10 minutes
3	Conventional Step Band <ul style="list-style-type: none"> <li>• Chain Tension</li> <li>• Track Alignment</li> </ul>	40 minutes
4	Module Step Band <ul style="list-style-type: none"> <li>• Chain Tension</li> <li>• Track Alignment</li> </ul>	40 minutes
5	Standard Hand Tools	10 minutes
6	Summary	5 minutes
<b>Total Time:</b>		<b>2 hours</b>

## Step Band Alignment and Adjustment



### Overview

#### Purpose

The purpose of this module is to:

- Prepare the participant to perform step band maintenance. The step band is defined as the term used to describe the steps, step chains, connected together by means of the step rollers (wheels) and axles.

#### Objectives

At the end of this chapter, the learner will be able to:

- Identify the step band alignment and adjustment maintenance procedures for step bands used in various transit escalators.
- Determine the types of tools required for step band alignment and adjustment.
- Demonstrate the ability to identify and perform the proper alignment and adjustment step band maintenance procedures on transit escalators.

#### Materials

Make sure you have the following:

- Laptop (one for leader)
- Participant Guides
- PowerPoint slide deck
- LCD projector
- A17.1 Safety Code for Elevators and Escalators

#### Preparation

PREPARE flip charts with the following titles:

- Class Expectations



## Instructor's Notes

Step Band Alignment and Adjustment

Choose a Case

Transit Elevator/Escalator Consortium

### Slide 3



**CLASS ACTIVITY** – Choose a Case.



**ASK** for a volunteer to pick a case. Click on the case chosen and ask the participants if the item held within would be used during step band alignment and adjustment.



### ANSWERS:

1. Yes
2. No
3. No
4. Yes
5. Yes
6. No
7. No
8. Yes

## Choose a Case

Which of these items would be used during step band alignment and adjustment?

1. \_\_\_\_\_
2. \_\_\_\_\_
3. \_\_\_\_\_
4. \_\_\_\_\_
5. \_\_\_\_\_
6. \_\_\_\_\_
7. \_\_\_\_\_
8. \_\_\_\_\_



## Instructor's Notes

Step Band Alignment and Adjustment

### Conventional – Chain tension

- Steps bunching up at the lower landing step running chains must be kept at the proper tension by keeping the carriage adjusted



Transit Elevator/Escalator Consortium 7

### Slide 8



**REVIEW** slide 8 and explain to participants how improper tension affects an escalator's performance.

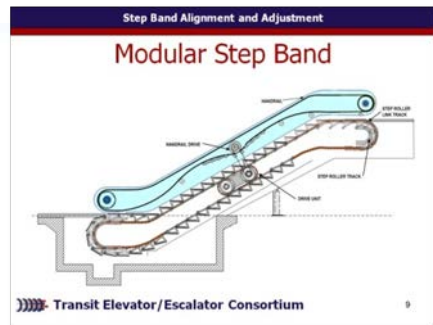
## Conventional – Chain Tension



**Figure 1: Steps Bunching Up**



## Instructor's Notes



Slide 10



REVIEW slide 10 and discuss modular step bands.

PREVIEW

## Modular Step Band

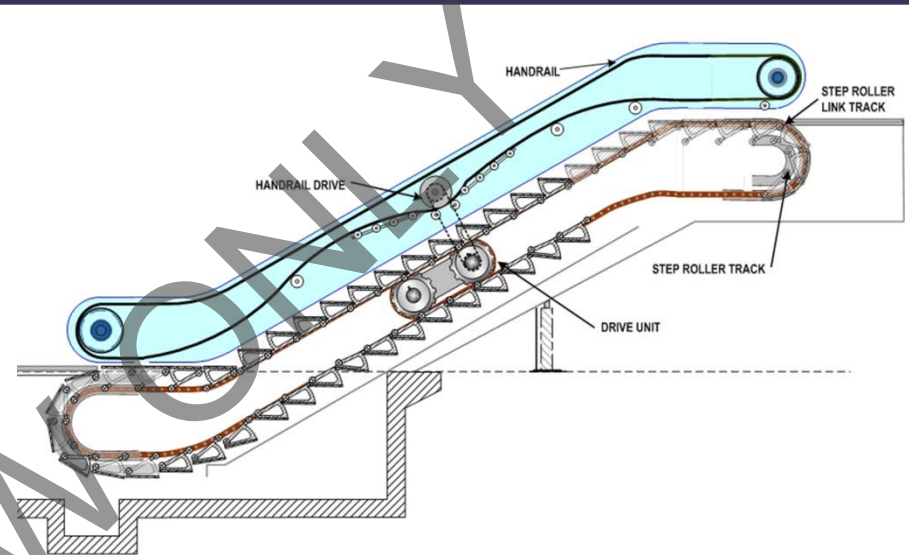
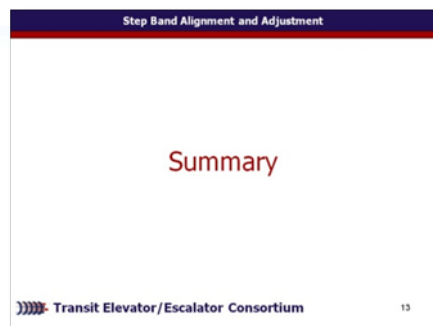


Figure 2: Modular Step Band



## Instructor's Notes

## Summary



### Slide 14



**REVIEW** slide 14 and summarize the module.



**ASK** the participants if they have any outstanding questions on what was presented.

PREVIEW ONLY